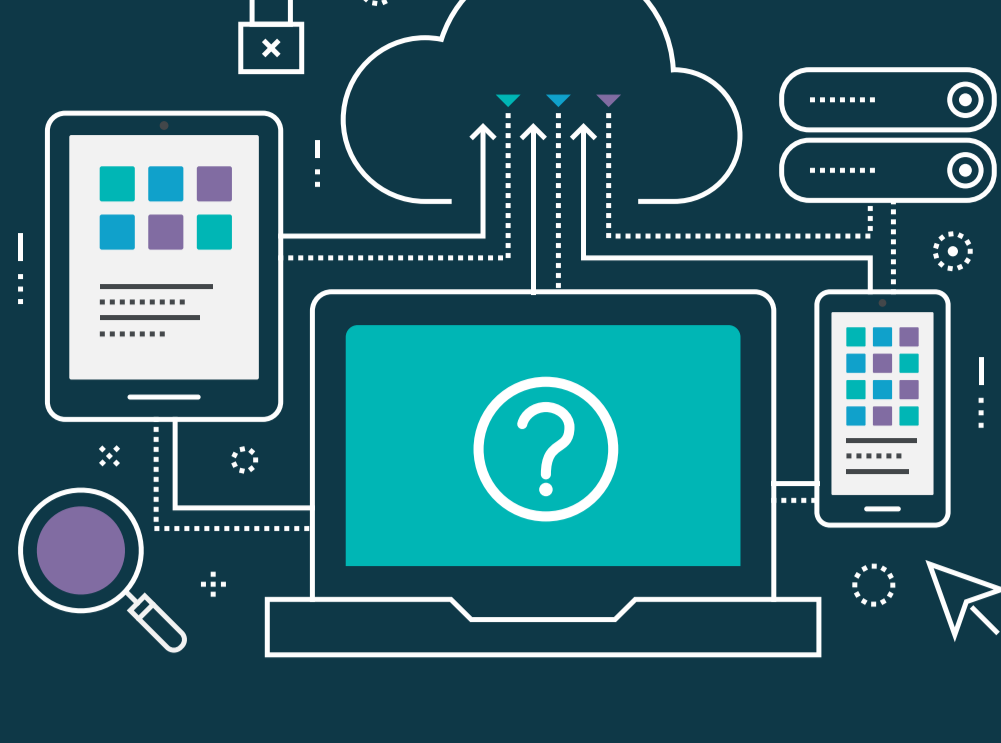


# IS SD-WAN RIGHT FOR ME?

Organizations are shifting from MPLS to Hybrid WAN architectures, using Software Defined Wide Area Networking (SD-WAN) to provision and manage the WAN environment.

According to Gartner analysts: More than 50% of WAN edge infrastructure refresh initiatives will be based on SD-WAN versus traditional routers by 2020!



## BENEFITS OF SD-WAN FROM NATILIK AND CISCO



80% Reduction in cost/Mbps

\$20M Savings in Operating Expenses (OpEx)



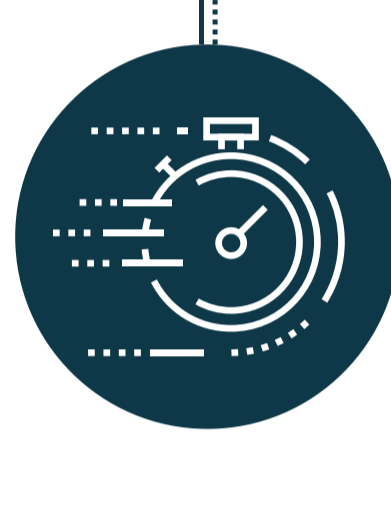
5X Improvement in Office 365 performance

100% Application uptime during network failures



4x Improvement in application latency

12X Improvement in change control time



## SD-WAN INCREASES BANDWIDTH AND PROVIDES PREDICTABLE, INCREASED PERFORMANCE



Reduces WAN expenses while increasing bandwidth



Offers optimized cloud access and a better user experience



Delivers reliable application performance and availability



Provides greater agility

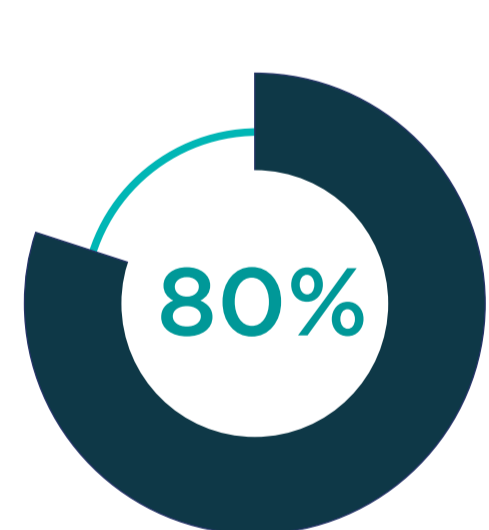


Affords advanced threat protection



Ensures a resilient network

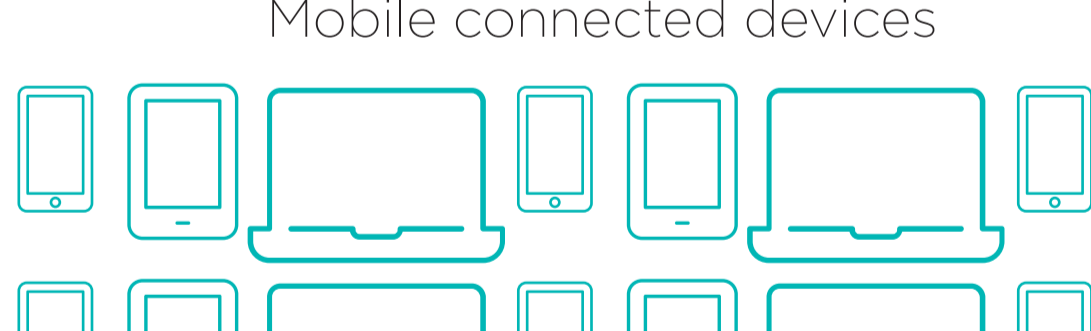
## MPLS CAN'T KEEP UP WITH CHANGES IN TECHNOLOGY



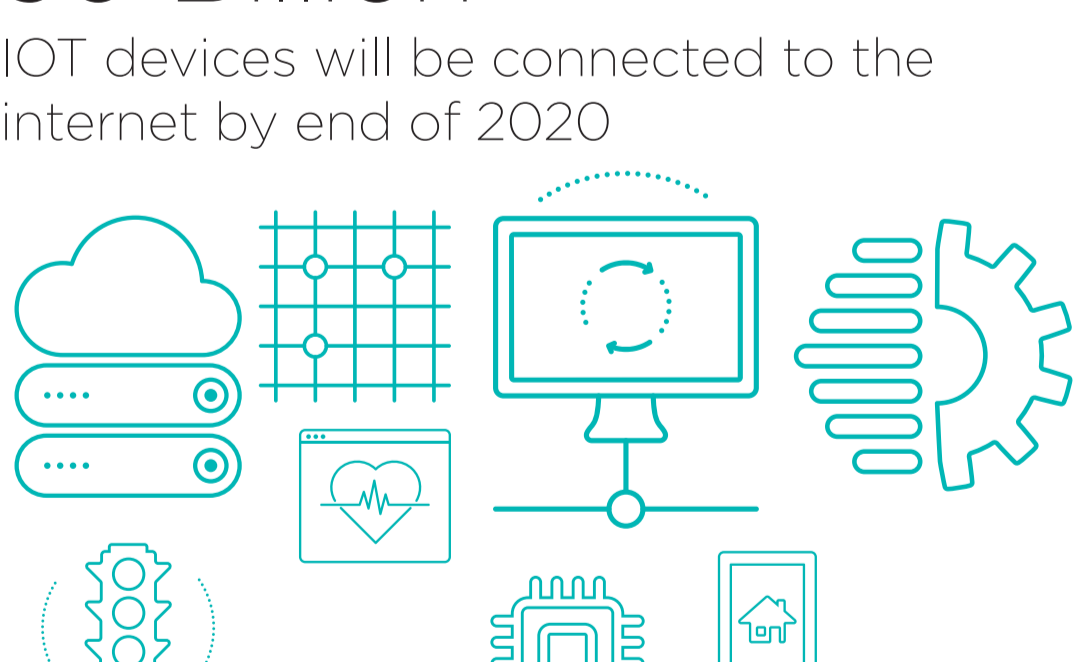
80% Of organizations were primarily using public cloud by 2019



10 Billion Mobile connected devices



30 Billion IOT devices will be connected to the internet by end of 2020



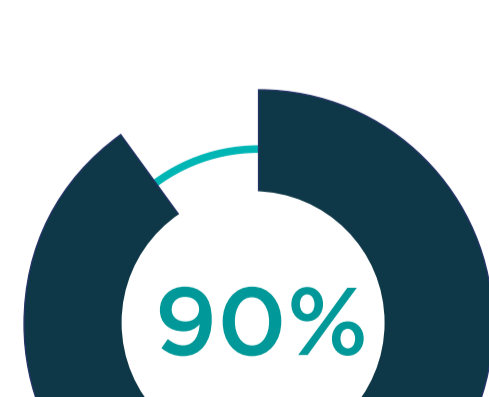
Up to 50% The expected annual increase in enterprise bandwidth and video adoption



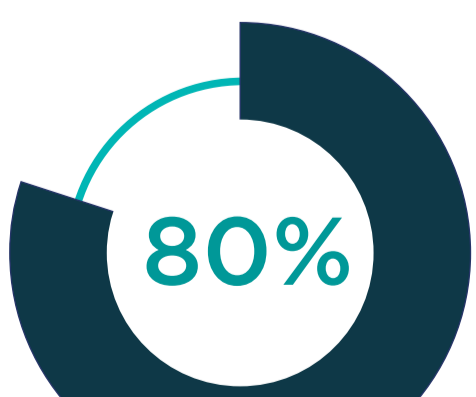
20-50% Increase in enterprise bandwidth per year through to 2018



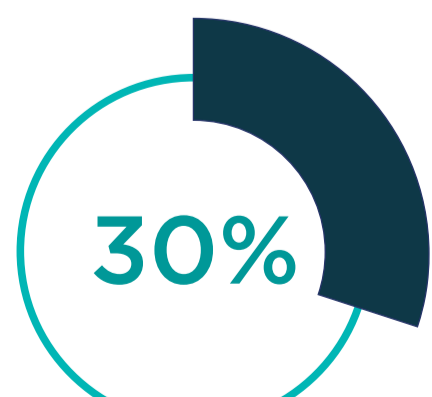
73% Growth in mobile devices from 2014-2018



90% Of revenue is generated in the branch



80% Of users are served by the branch office



30% Of advanced threats targeted branch offices in 2016 (up from 5%)

## CLOUD MANAGED SD-WAN DELIVERS AN END-TO-END SECURE PLATFORM ACROSS THE ACCESS, WAN, DATA CENTRE AND CLOUD

Get in touch with Natilik today to discuss more of the reasons that SD-WAN could be the right choice for your business.